

# CEILING ROSES

---

## CEILING MEDALLIONS

CENTRE PANEL



CENTRE PANEL

Who can say no to ceiling roses? These intricate and exquisite works of art are every designer's dream. From the classic round shape to free-form designs, these alluring beauties always make the right impression.

# CENTER PANEL / CEILING ROSES CEILING MEDALLIONS

UNIT = mm : inches



**HKH CP1**  
Ø 620 (24 $\frac{7}{16}$ " )

Website: [www.hkhplaster.com](http://www.hkhplaster.com)



**HKH CP4**  
Ø 570 (22 $\frac{7}{16}$ " )

Website: [www.hkhplaster.com](http://www.hkhplaster.com)



**HKH CP3**  
Ø 630 (24 $\frac{13}{16}$ " )

Website: [www.hkhplaster.com](http://www.hkhplaster.com)



**HKH CP5**  
Ø 450 (17 $\frac{11}{16}$ " )

Website: [www.hkhplaster.com](http://www.hkhplaster.com)



**HKH CP6**  
Ø 420 (16 $\frac{9}{16}$ " )

Website: [www.hkhplaster.com](http://www.hkhplaster.com)



**HKH CP7**  
Ø 660 (26" )

Website: [www.hkhplaster.com](http://www.hkhplaster.com)



**HKH CP8**  
Ø 930 x 660 (36 $\frac{3}{8}$ " x 26" )

Website: [www.hkhplaster.com](http://www.hkhplaster.com)



**HKH CP9**  
Ø 840 x 610 (33 $\frac{1}{16}$ " x 24" )

Product designs are copyright reserved.

# CENTER PANEL / CEILING ROSES CEILING MEDALLIONS

UNIT = mm : inches



**HKH CP17**  
Ø 460 (18 $\frac{1}{8}$ " )

Website: [www.hkhplaster.com](http://www.hkhplaster.com)



**HKH CP11**  
Ø 730 (28 $\frac{3}{4}$ " )

Website: [www.hkhplaster.com](http://www.hkhplaster.com)



**HKH CP16**  
Ø 620 (24 $\frac{7}{16}$ " )



**HKH CP10**  
Ø 1140 (44 $\frac{7}{8}$ " )

Website: [www.hkhplaster.com](http://www.hkhplaster.com)



**HKH CP12**  
Ø 840 (33 $\frac{1}{8}$ " )

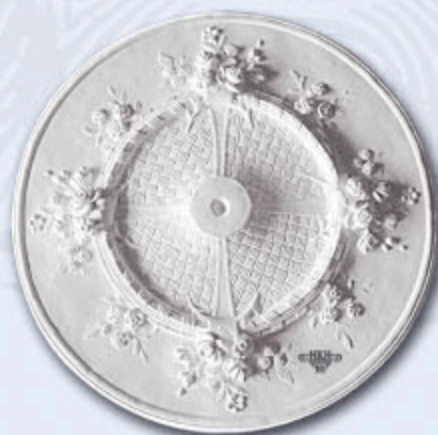
Website: [www.hkhplaster.com](http://www.hkhplaster.com)



**HKH CP14A**  
Ø 750 (29 $\frac{1}{2}$ " )

**HKH CP14B**  
Ø 500 (19 $\frac{11}{16}$ " )

Website: [www.hkhplaster.com](http://www.hkhplaster.com)



**HKH CP15**  
Ø 650 (25 $\frac{5}{8}$ " )



**HKH CP13**  
Ø 950 (37 $\frac{3}{8}$ " )

Product designs are copyright reserved.

UNIT = mm : inches



Website: www.hkhplaster.com



**HKH CP18**  
Ø 940 (37")



**HKH CP19**  
Ø 520 (20½")



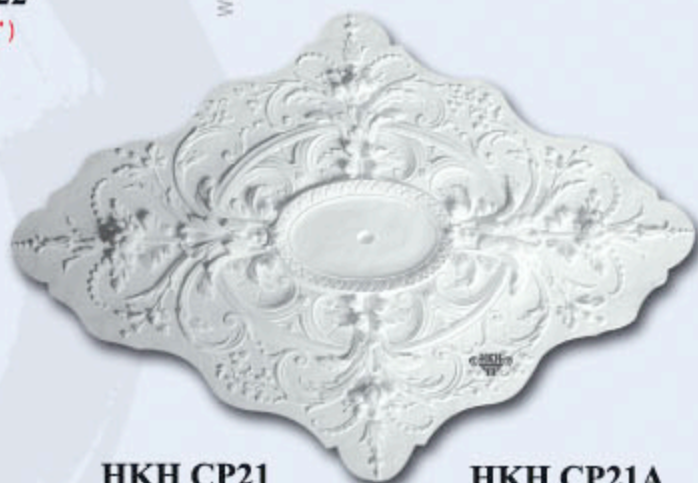
**HKH CP22**  
Ø 525 (20<sup>11</sup>/<sub>16</sub>" )



**HKH CP31**  
Ø 520 (20½")



**HKH CP20**  
Ø 750 x 1100 (29½" x 43<sup>5</sup>/<sub>16</sub>" )



**HKH CP21**  
Ø 950 x 1375 (37<sup>3</sup>/<sub>8</sub>" x 54<sup>1</sup>/<sub>8</sub>" )

**HKH CP21A**  
Ø 780 x 1050 (30<sup>11</sup>/<sub>16</sub>" x 41<sup>5</sup>/<sub>16</sub>" )

Website: www.hkhplaster.com

Website: www.hkhplaster.com

Website: www.hkhplaster.com

Website: www.hkhplaster.com

Website: www.hkhplaster.com

Product designs are copyright reserved.

UNIT = mm : inches



**HKH CP2A**

Ø 925 (36<sup>7</sup>/<sub>16</sub>"

**HKH CP2B**

Ø 1270 (50"



**HKH CP23A**

Ø 700 (27<sup>5</sup>/<sub>16</sub>"

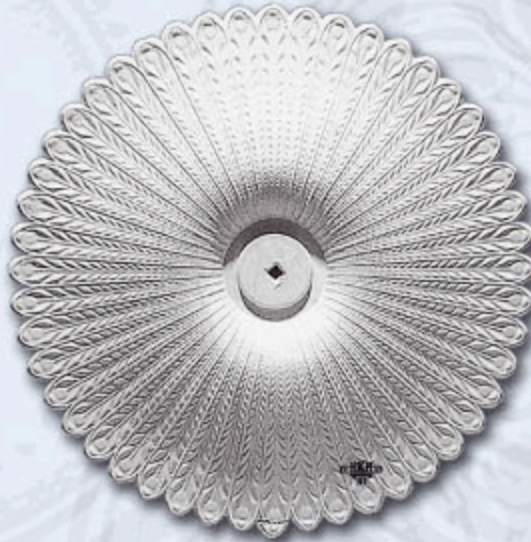
**HKH CP23B**

Ø 420 (16<sup>5</sup>/<sub>16</sub>"



**HKH CP29**

Ø 180 (7<sup>1</sup>/<sub>8</sub>"



**HKH CP25**

Ø 930 (36<sup>5</sup>/<sub>8</sub>"



**HKH CP27A**

Ø 500 (19<sup>11</sup>/<sub>16</sub>"

**HKH CP27B**

Ø 680 (26<sup>3</sup>/<sub>4</sub>"



**HKH CP32**

Ø 895 (35<sup>1</sup>/<sub>4</sub>"



**HKH CP50**

Ø 440 (17<sup>5</sup>/<sub>16</sub>"

Website: www.hkhplaster.com

Website: www.hkhplaster.com

Website: www.hkhplaster.com

Website: www.hkhplaster.com

Product designs are copyright reserved.

# CENTER PANEL / CEILING ROSES CEILING MEDALLIONS

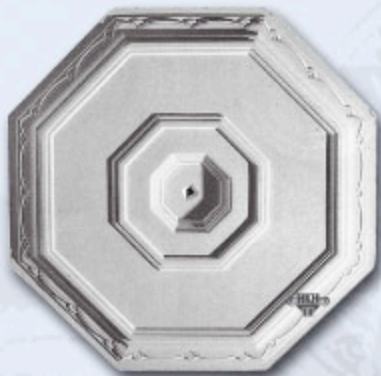
UNIT = mm : inches

**HKH CP26A**

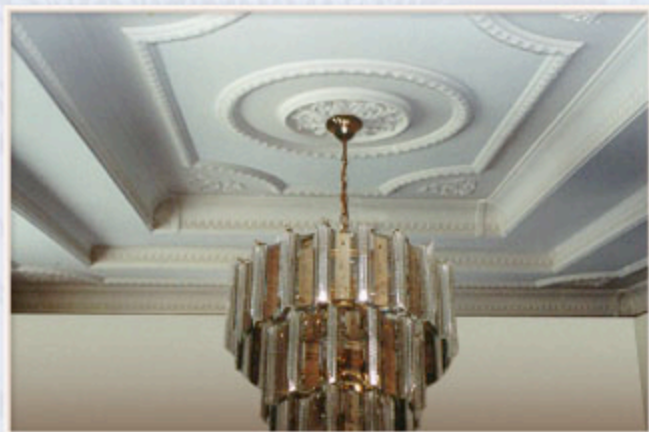
Ø 1700 (66<sup>15</sup>/<sub>16</sub>" )

**HKH CP26B**

Ø 620 (24<sup>7</sup>/<sub>16</sub>" )



Website: www.hkhplaster.com



**HKH CP24**

Ø 490 (19<sup>5</sup>/<sub>16</sub>" )



**HKH CP28**

Ø 215 (8<sup>7</sup>/<sub>16</sub>" )

Website: www.hkhplaster.com



**HKH CP35**

Ø 1000 x 1000 (39<sup>3</sup>/<sub>8</sub>" x 39<sup>3</sup>/<sub>8</sub>" )

Website: www.hkhplaster.com



**HKH CP30**

Ø 800 (31<sup>1</sup>/<sub>2</sub>" )

Website: www.hkhplaster.com



**HKH CP37**

Ø 500 (19<sup>15</sup>/<sub>16</sub>" )

Website: www.hkhplaster.com



**HKH CP39**

Ø 600 (23<sup>5</sup>/<sub>8</sub>" )

Website: www.hkhplaster.com



**HKH CP33A**

Ø 440 (17<sup>15</sup>/<sub>16</sub>" )

**HKH CP33B**

Ø 680 (26<sup>3</sup>/<sub>4</sub>" )

Website: www.hkhplaster.com

Website: www.hkhplaster.com

Product designs are copyright reserved.

# CENTER PANEL / CEILING ROSES CEILING MEDALLIONS

UNIT = mm : inches



Website: www.hkhplaster.com



**HKH CP34**  
Ø 470 x 470 (18½" x 18½")



**HKH CP38**  
Ø 830 (32½")

Website: www.hkhplaster.com



Website: www.hkhplaster.com

**HKH CP36**  
Ø 560 x 560 (22¼" x 22¼")

Website: www.hkhplaster.com



**HKH CP49**  
Ø 860 x 500 (33¾" x 19½")

Website: www.hkhplaster.com



**HKH CP40A**  
Ø 470 (18½")

**HKH CP40B**  
Ø 680 (26¾")

Website: www.hkhplaster.com



**HKH CP47**  
Ø 430 x 310 (16½" x 12¾")



**HKH CP41**  
Ø 750 (29½")

Website: www.hkhplaster.com



**HKH CP44**  
Ø 520 (20½")

Website: www.hkhplaster.com



**HKH CP46**  
Ø 760 (29½")

Website: www.hkhplaster.com



**HKH CP42**  
Ø 660 (26")

Product designs are copyright reserved.



**HKH CP43**  
Ø 670 (26<sup>3</sup>/<sub>8</sub>" )

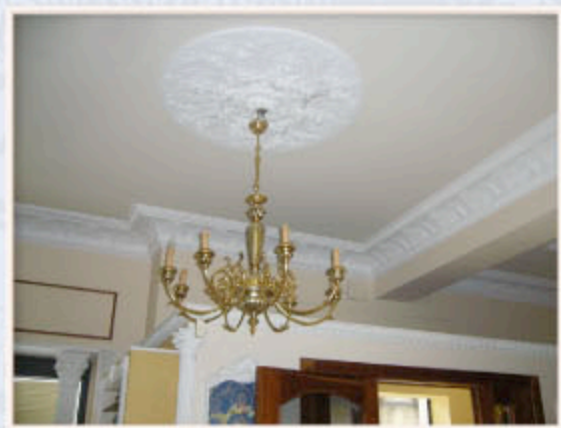
Website: www.hkhplaster.com

Website: www.hkhplaster.com



**HKH CP45**  
Ø 950 (37<sup>3</sup>/<sub>8</sub>" )

Website: www.hkhplaster.com



**HKH CP48**  
Ø 830 (32<sup>5</sup>/<sub>8</sub>" )

Website: www.hkhplaster.com



**HKH CP 51A**  
Ø 305 (12" )

**HKH CP 51B**  
Ø 600 (23<sup>5</sup>/<sub>8</sub>" )

**HKH CP 51C**  
Ø 800 (31<sup>1</sup>/<sub>2</sub>" )

Website: www.hkhplaster.com



**HKH CP 52**  
Ø 290 (11<sup>3</sup>/<sub>8</sub>" )

Website: www.hkhplaster.com



**HKH CP 53**  
Ø 890 (35<sup>1</sup>/<sub>8</sub>" )

Website: www.hkhplaster.com



**HKH CP54**  
Ø 840 (33<sup>1</sup>/<sub>8</sub>" )

Product designs are copyright reserved.

# CENTER PANEL / CEILING ROSES

UNIT = mm : inches



**HKH CP55**

Ø 830 (32<sup>11</sup>/<sub>16</sub>"\*)  
Ø 140 (5<sup>1</sup>/<sub>2</sub>"\*)

Website: www.hkhplaster.com



**HKH CP72**

Ø 500 (19<sup>11</sup>/<sub>16</sub>"\*)

Website: www.hkhplaster.com



**HKH CP56**

Ø 750 (29<sup>1</sup>/<sub>2</sub>"\*)  
Ø 150 (5<sup>7</sup>/<sub>8</sub>"\*)

Website: www.hkhplaster.com



**HKH CP57**

Ø 600 (23<sup>5</sup>/<sub>8</sub>"\*)

Website: www.hkhplaster.com



**HKH CP58**

Ø 450 (17<sup>11</sup>/<sub>16</sub>"\*)

Website: www.hkhplaster.com



**HKH CP59**

Ø 500 (19<sup>11</sup>/<sub>16</sub>"\*)

Website: www.hkhplaster.com



**HKH CP60**

Ø 300 (11<sup>13</sup>/<sub>16</sub>"\*)

Website: www.hkhplaster.com



**HKH CP61A**

Ø 480 (18<sup>7</sup>/<sub>8</sub>"\*)

**HKH CP61B**

Ø 800 (31<sup>1</sup>/<sub>2</sub>"\*)



**HKH CP62**

Ø 480 (18<sup>7</sup>/<sub>8</sub>"\*)

Website: www.hkhplaster.com



**HKH CP63**

Ø 600 (23<sup>5</sup>/<sub>8</sub>"\*)

Product designs are copyright reserved.

# CEILING MEDALLIONS

UNIT = mm : inches

Website: www.hkhplaster.com



**HKH CP65**

Ø 680 x 970 (26 $\frac{3}{4}$ " x 38 $\frac{3}{16}$ " )

Website: www.hkhplaster.com



**HKH CP64**

Ø 440 (17 $\frac{5}{16}$ " )

Website: www.hkhplaster.com



**HKH CP66**

Ø 825 x 1040 (32 $\frac{1}{2}$ " x 40 $\frac{15}{16}$ " )

Website: www.hkhplaster.com



**HKH CP67**

Ø 660 x 905 (26" x 35 $\frac{5}{8}$ " )



**HKH CP 68A**

Ø 520 (20 $\frac{1}{2}$ " )

**HKH CP 68B**

Ø 700 (27 $\frac{5}{8}$ " )

Website: www.hkhplaster.com

Website: www.hkhplaster.com



**HKH CP 69A**

Ø 565 (22 $\frac{1}{4}$ " )

**HKH CP 69B**

Ø 720 (28 $\frac{5}{16}$ " )

Website: www.hkhplaster.com



**HKH CP 70A**

Ø 450 (17 $\frac{11}{16}$ " )

**HKH CP 70B**

Ø 510 (20 $\frac{1}{16}$ " )

Website: www.hkhplaster.com



**HKH CP 71**

Ø 1130 (44 $\frac{1}{2}$ " )

	40 1 $\frac{5}{8}$ "		40 1 $\frac{5}{8}$ "
CP 70A	65 2 $\frac{5}{8}$ "	320 12 $\frac{3}{4}$ "	65 2 $\frac{5}{8}$ "
CP 70B	65 2 $\frac{5}{8}$ "	380 14 $\frac{15}{16}$ "	65 2 $\frac{5}{8}$ "

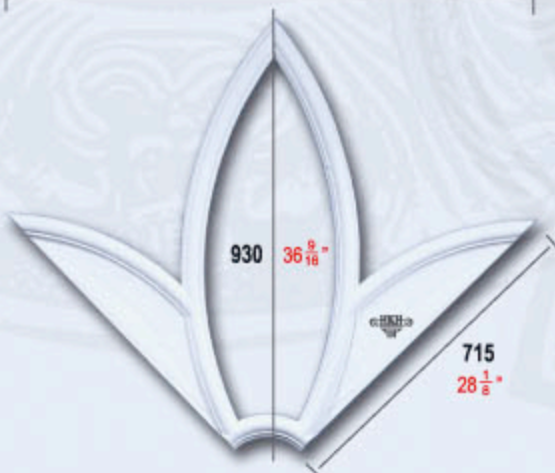
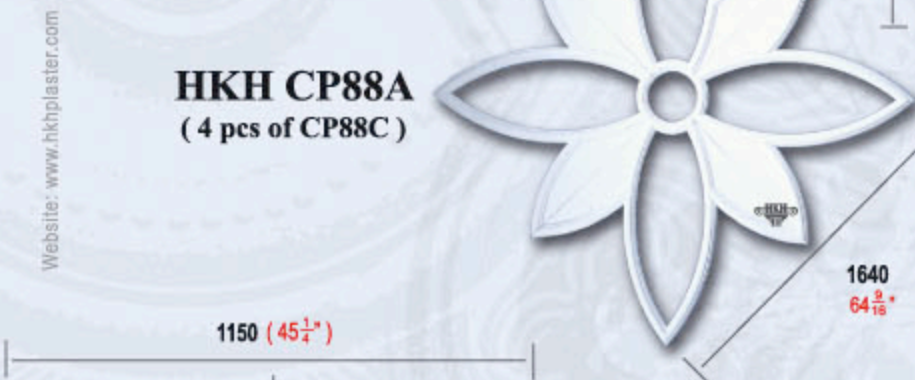
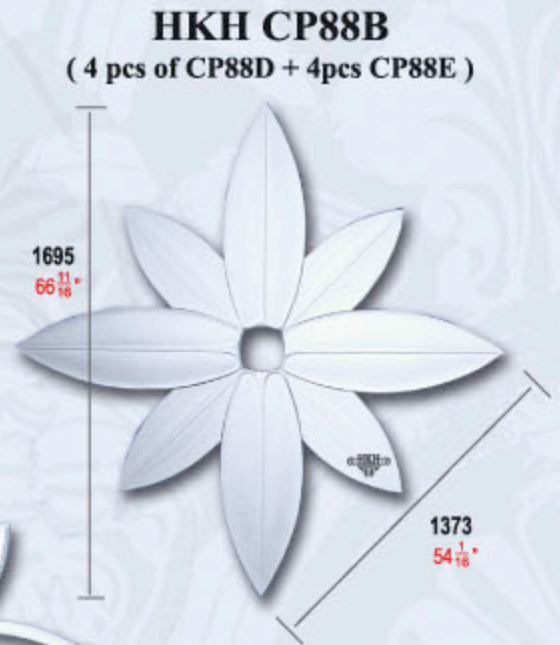
Product designs are copyright reserved.

# COMPOSED CEILING MEDALLIONS

UNIT = mm : inches



Website: www.hkhplaster.com



Product designs are copyright reserved.



## HKH CP99

( 3 pcs of CP99A + 6 pcs of CP99B + 1 pc of CP99D + 1 pc of CP99C )



1910  
75 <sup>3</sup>/<sub>16</sub>"

### HKH CP99A



### HKH CP99B



### HKH CP99C



### HKH CP99D

